

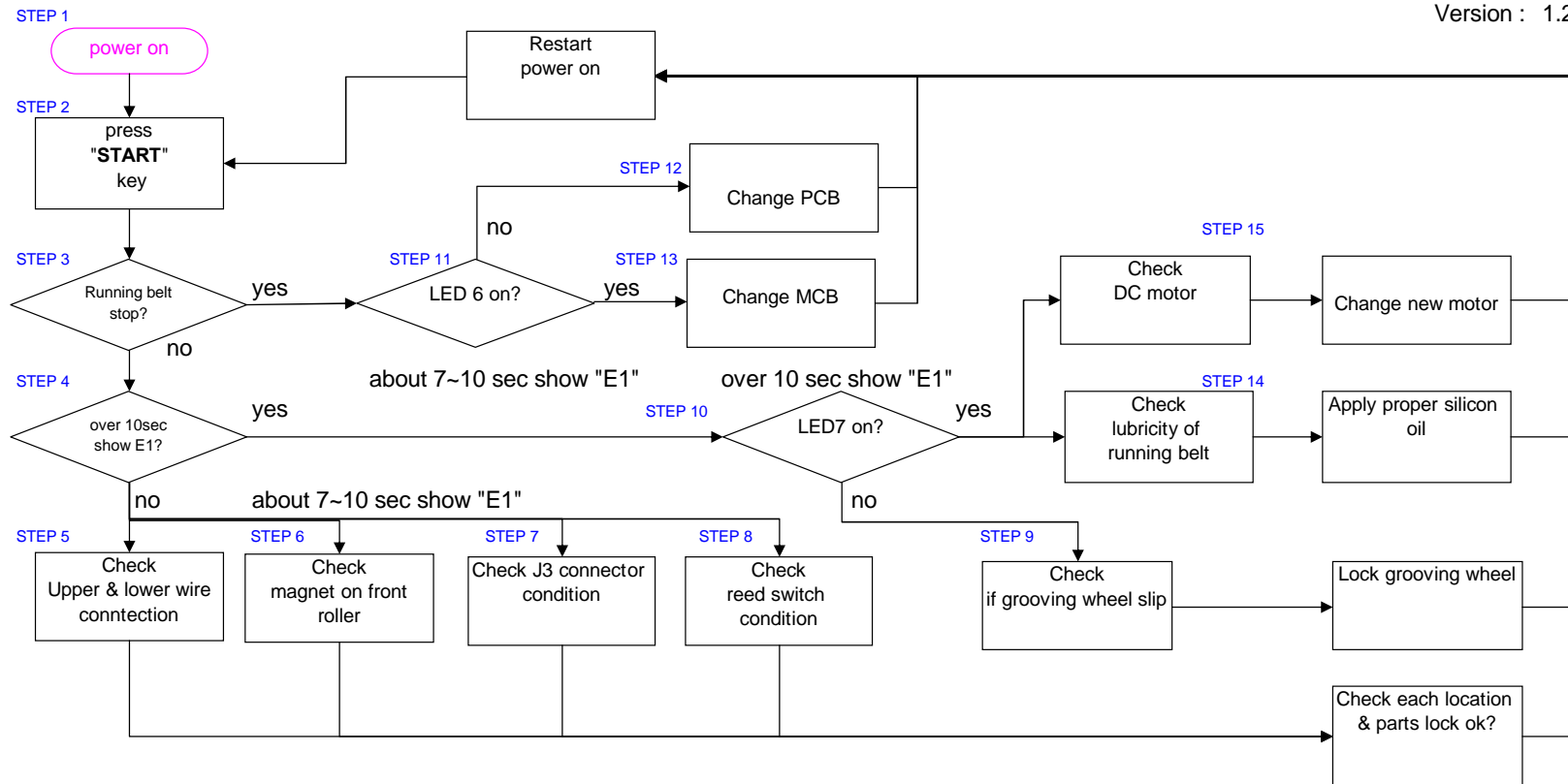
Treadmill Trouble Shooting Guide(Error code check eliminate)

Error code = E1

1.Flow chart of E1 Check(For XT3600/4600/4800/6600/6800)

Wisdom 1209'04

Version : 1.2

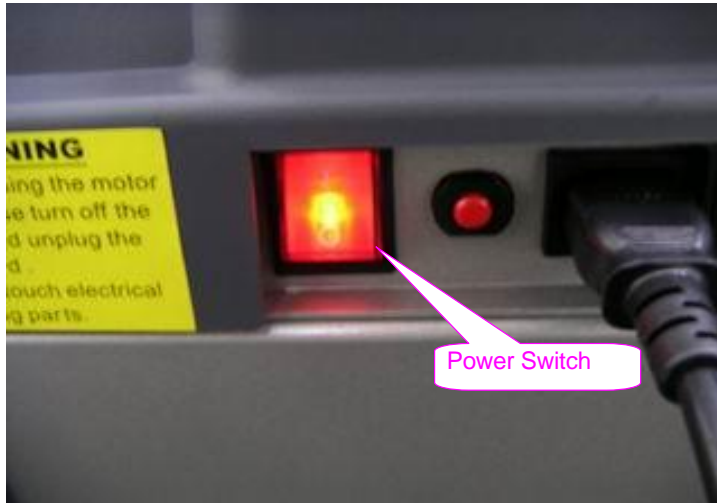


Treadmill Trouble Shooting Guide(Error code check eliminate)

*Explanation

STEP 1 : Power on---
Power switch on , lights on & upper board reacts.

[RETURN](#)



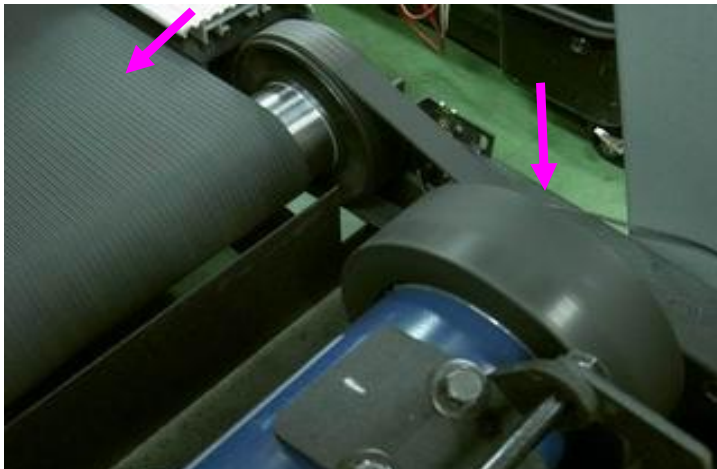
STEP2 :Push "START" to start treadmill.

[RETURN](#)



STEP 3 : When starting treadmill, motor & running belt react.

[RETURN](#)



STEP 4 : After 7~10 sec shows "E1" .

(Different location shows in different model.)

[RETURN](#)



Treadmill Trouble Shooting Guide(Error code check eliminate)

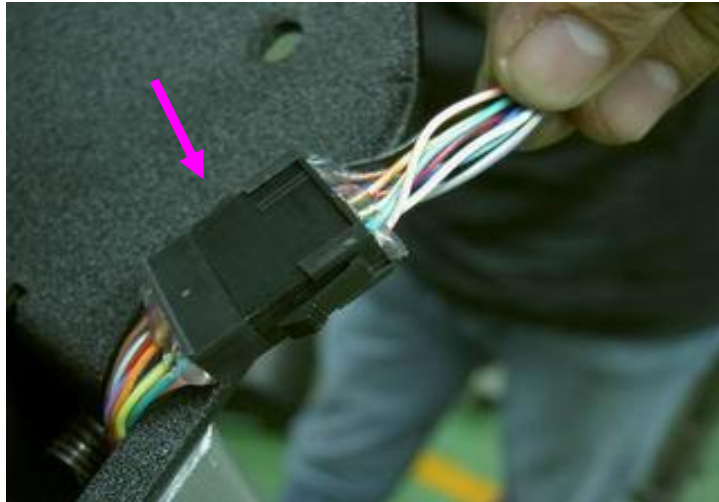


Treadmill Trouble Shooting Guide



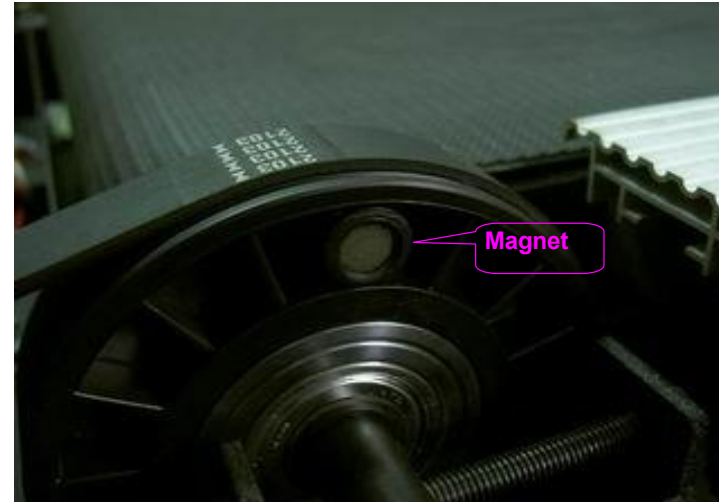
STEP 5 : Checking upper & lower wire connection condition.

[RETURN](#)



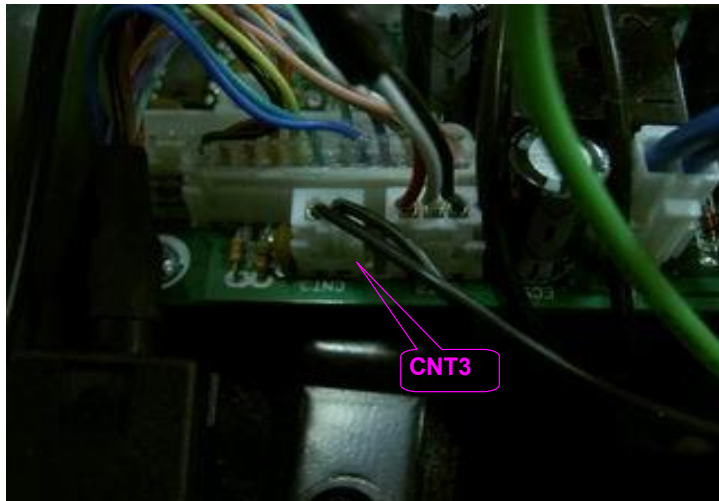
STEP 6 : Check condition of magnet on front roller.

[RETURN](#)



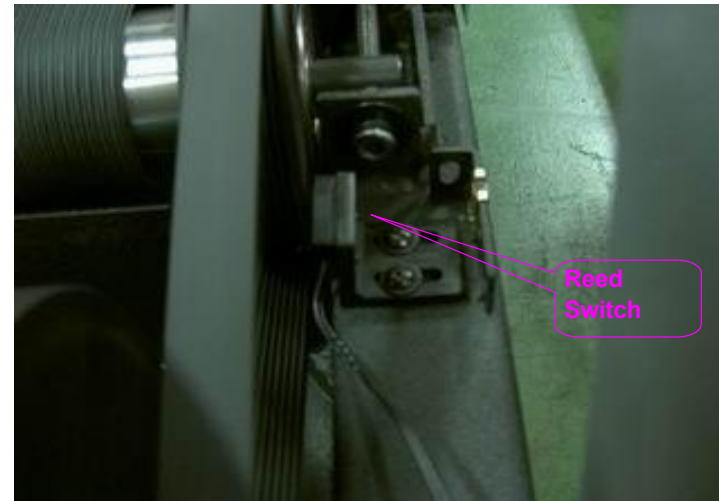
STEP 7 : Check CNT3 connection.

[RETURN](#)



STEP 8 : Check reed switch condition
(Use multimeter OHM to check reed switch condition)

[RETURN](#)



Treadmill Trouble Shooting Guide



STEP 9 : Check if grooving belt slip
(When man on treadmill, running belt tuns slowly & get slippy)

[RETURN](#)



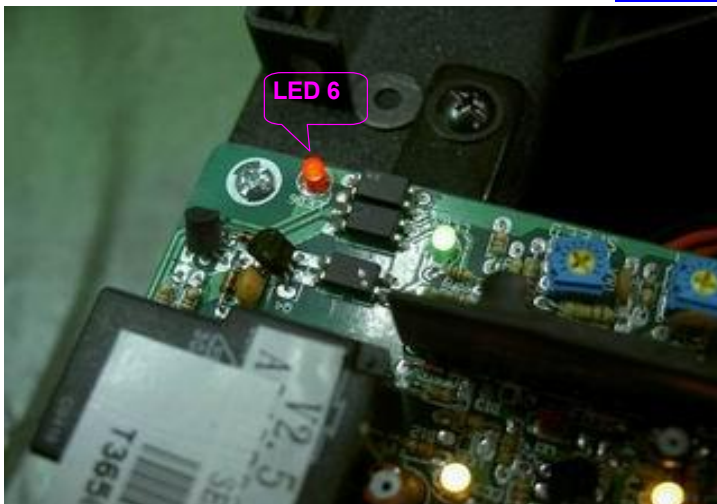
STEP 10 : Check LED7(Overload LED) is on or not.

[RETURN](#)



STEP 11 : Check LED 6 is on or not.

[RETURN](#)



STEP 12 : Check upper board "start enable signal" is on or not
(If LED 6 isn't on, change a new PCB)

STEP 13 : Check REL1 of MCB on & check relative driving parts condition.
(If LED 6 light is on, but can't drive motor working. Suggest changing a new MCB and broken MCB return Steelflex for further checking.)

STEP 14 : LED 7 on - check lubricity , apply Steelflex silicon oil properly between running belt & deck .

STEP 15 : After step 14 still can't solve overload problem, suggest to change a new DC motor.

[RETURN](#)

Treadmill Trouble Shooting Guide(Error code check eliminate)

